

Diwar Wala

**RCC
PRE-CAST
COMPOUND WALL**

LOW COST- MORE DURABLE

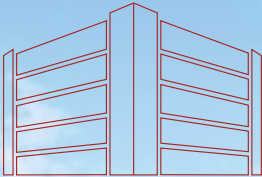
Global Precast Pvt. Ltd.

Near Haibatpur Khokhri Flyover, New Bypass, Haibatpur, Jind 126102



+91 91 3400 3500

www.diwarwala.com



Diwar Wala

ABOUT US

Global Precast Pvt. Ltd. We are leading manufacturer and supplier of Precast RCC Compound Wall in Haryana. All our products are made by latest technology, Supreme Quality Cement and other construction material in tandem with market needs.

Mr. Vikas Khatkar (Director) is working in the same field since 2007. All the casting and installations are done by the experienced labour in the supervision of well qualified staff.

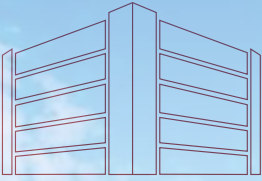
Our products are widely demanded due to quality products & satisfaction of customers. Having attributes like eco-friendliness, Time-saving, Simple Installation, Securem Re-usability, Better outlook, Durability and Utilizing less space.

The products we offer are extensively used for making compound Wall, Godown Wall, Office Building Wall, Industrial Shed Wall, Footpath Curbing, Garden Curbing, Labor Quarters etc.

Global Precast Pvt. Ltd.



+91 91 3400 3500
www.diiwarwala.com



Diwar Wala

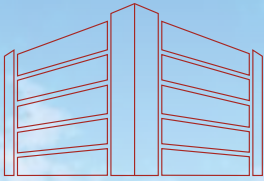
COMPOUND WALL DESIGN



Global Precast Pvt. Ltd.



+91 91 3400 3500
www.diwarwala.com



Diwar Wala

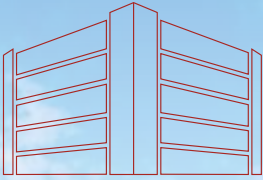
INDUSTRIAL SHADE WALL



Global Precast Pvt. Ltd.



+91 91 3400 3500
www.diiwarwala.com



Diwar Wala

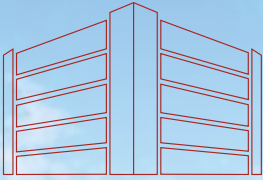
APPLICATION ON SOFT SOIL



Global Precast Pvt. Ltd.



+91 91 3400 3500
www.diwarwala.com



Diwar Wala



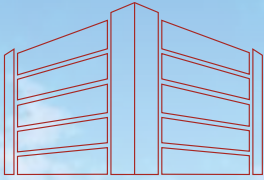
INDUSTRIAL SHADE WALL



Global Precast Pvt. Ltd.



+91 91 3400 3500
www.diiwarwala.com



Diwar Wala

LABOUR QUARTER



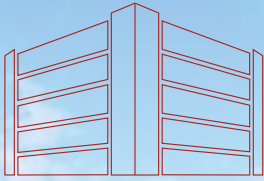
FARMHOUSE WALL



Global Precast Pvt. Ltd.



+91 91 3400 3500
www.diwarwala.com

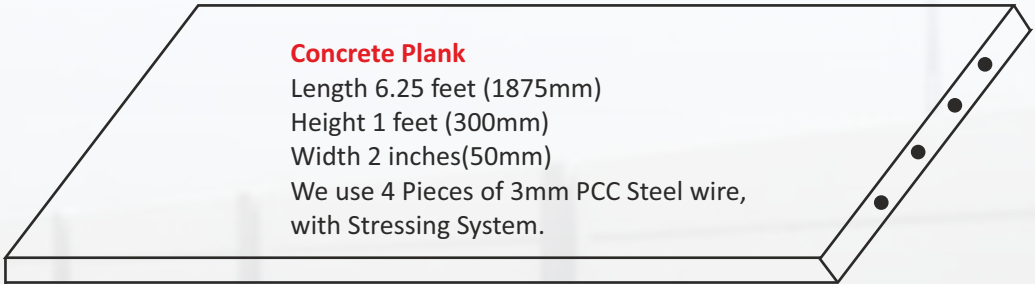


Diwar Wala

Column should be fixed in 600mm deep and 450mm×450mm hole in the ground. The hole should be filled with the designed concrete mix. The distance between two column should be a plank. Other planks should be set one by one according to height of wall.

Specification

Vertical column as well as horizontal planks are cast using prestress technology with designed concrete mix using vibrating machine these are vibrated. Planks and column are curing with water for required time to achieve maximum durability and strength.



Columns

Columns are 6X6 inches. (150X150mm)
We use 7 Pieces of 3mm PCC Steel wire
With Stressing System.
Length is depends on customer's requirement.

